

QUICKLOC® series 60

Quick releases for repeated unlockable fastenings
and fast assembly

BÖLLHOFF

QUICKLOC® series 60 quick releases

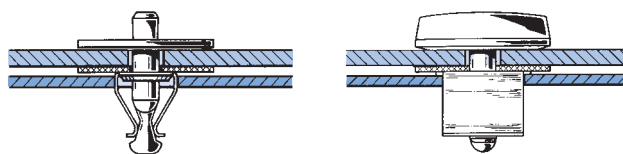
The system

QUICKLOC® quick releases of the 60 series are used whenever the accessibility of (machine) components must be ensured. This is a common requirement especially for high-maintenance components

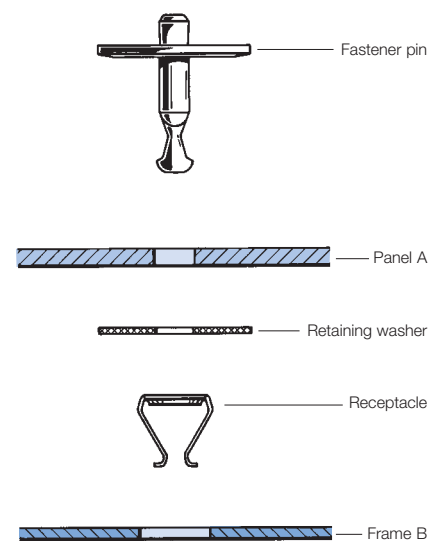
The fastening system is based on three individual parts:

- the fastener pin (upper part)
- the receptacle (bottom part) and
- the retaining washer

Example of installation



Components



The Installation

For installation, the fastener is inserted through a hole in the cover and secured against loss by a retaining washer.

The receptacle must be clipped into a rectangular hole.

Opening and closing is performed

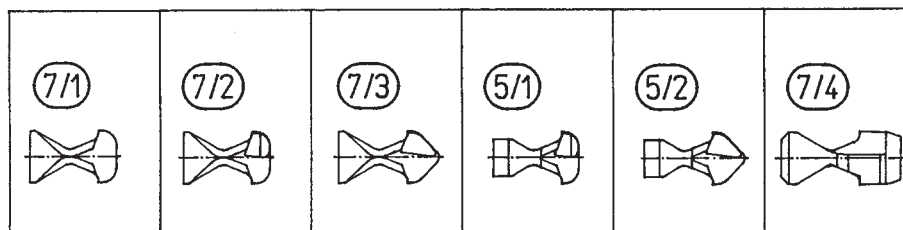
- through manual actuation (without tool)
- with tool (e.g. for head shapes with cross recess or internal serration)

QUICKLOC® in function

To close, turn the fastener stud with light pressure one quarter turn to the right or left. The receptacle holds the stud in position by the sloping shoulders.

For opening, a quarter turn to the right or left forces the legs of the spring apart. These in turn push the fasteners into the open position by the chamfer on the side of the stud.

Due to the use of different curve geometries at the locking bolt, perfect adaptation to the desired type of actuation is possible, e.g. axial pressure with simultaneous rotation.



Selection of possible closing curves

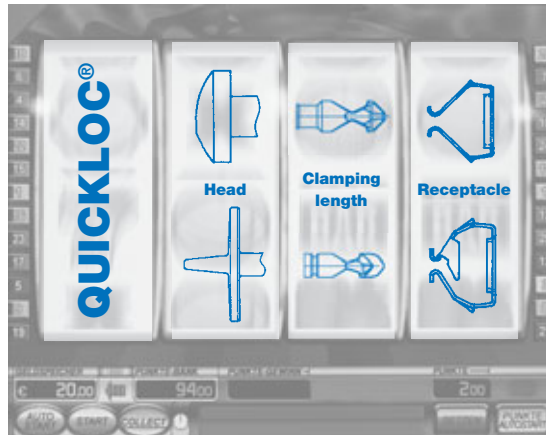
According to the new Machinery Directive (2006/42/EC), protective devices (such as housings or maintenance flaps) must be installed with captive fasteners that can only be removed with a tool. QUICKLOC® quick releases of the 60 series fulfil those requirements and apart from that also ensure very high performance reliability with easy assembly.

QUICKLOC® series 60 quick releases

QUICKMatch product configurator

Efficiently and effectively towards technical product finding. With our new QUICKMatch product configurator we create your QUICKLOC® quick release quickly and easily. Out of more than 2,000 variants we select the matching components according to your specification – incl. lead time and price.

NEW!



QUICKMatch product configurator

A convincing diversity

The decisive parameters for selecting your QUICKLOC® quick release are:

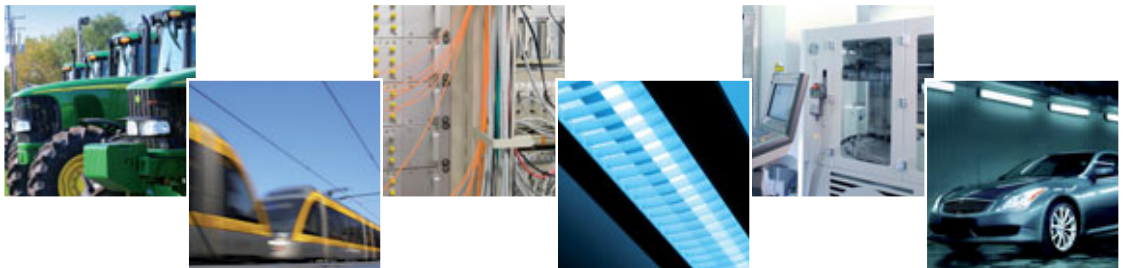
- the head shape
- the clamping length (shaft length 2.5 mm to 37.5 mm)
- the receptacle (bottom part, minimum 8 different types)

Your benefits

- Great variety of versions
- Easy installation due to user-friendly plug-in connection
- Easily repeated accessibility with high performance reliability
- Insensitivity to vibrations and dirt
- Low weight

Applications

QUICKLOC® is a versatile product and as such used in many industries, such as the building industry, agricultural machinery engineering, machine-tool building, lighting industry, rail vehicle engineering as well as in electrical and electronic installations or the automotive industry.



Please do not hesitate to contact us!

Then we can design your QUICKLOC® quick release together with you!

Böllhoff International with companies in:

Argentina
Austria
Brazil
Canada
China
Czech Republic
France
Germany
Hungary
India
Italy
Japan
Mexico
Poland
Romania
Russia
Slovakia
Spain
Turkey
United Kingdom
USA

Apart from these 21 countries, Böllhoff supports its international customers in other important industrial markets in close partnership with agents and dealers.

Subject to technical change.
Reprinting, even in extract form, only permitted with express consent.
Observe protective note according to DIN 34.

Böllhoff Group
Please find your local contact on www.boellhoff.com
or contact us under fasteningtechnology@boellhoff.com

