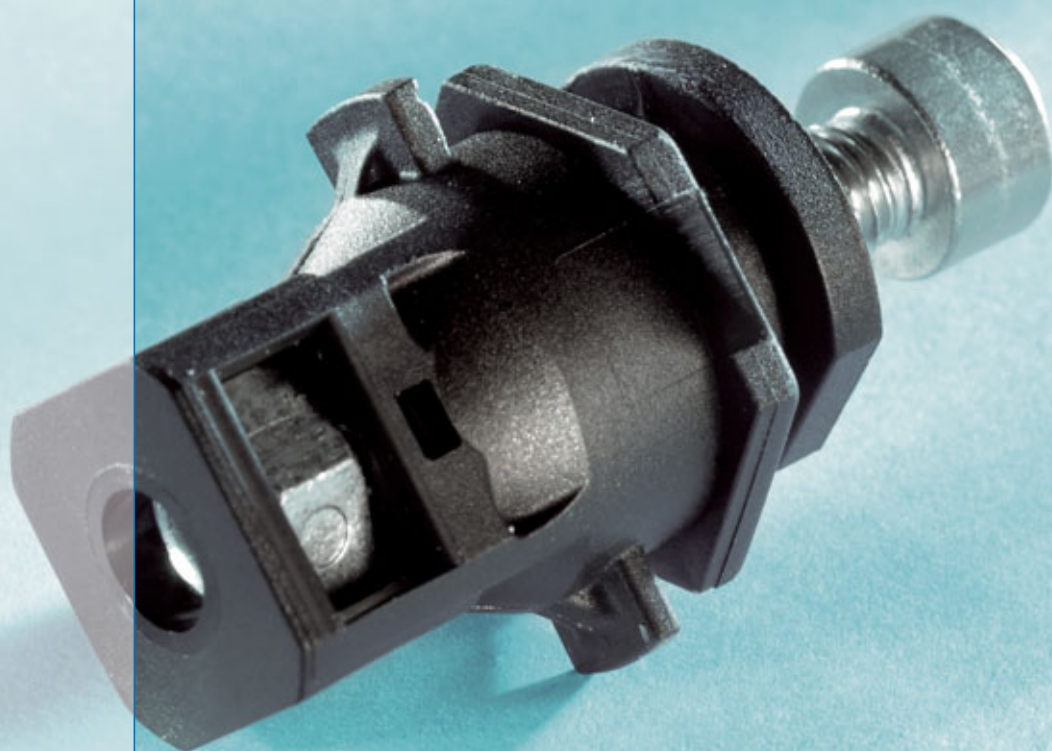


FLEXITOL® plastic

Stepless tolerance
compensation system
for metric screws



BÖLLHOFF



FLEXITOL® plastic for metric screws

Our development continues! Automotive manufacturers' and customers' demands on reliable function and first-grade quality, such as on small gap widths, are still high.

To be able to also meet these demands in today's highly automatic assembly industry in the future, as a specialist in fastening and assembly technology, we have developed another economical assembly solution with tolerance compensation. FLEXITOL® plastic for metric screws is a combination of well-proven and innovative technology – an efficient joint.

The benefits

- Considerably reduced assembly times due to the bayonet connection
- Cost-effectiveness due to the use of standard screws
- High performance reliability
- Alternative connection with K' in K' (plastic in plastic) design available

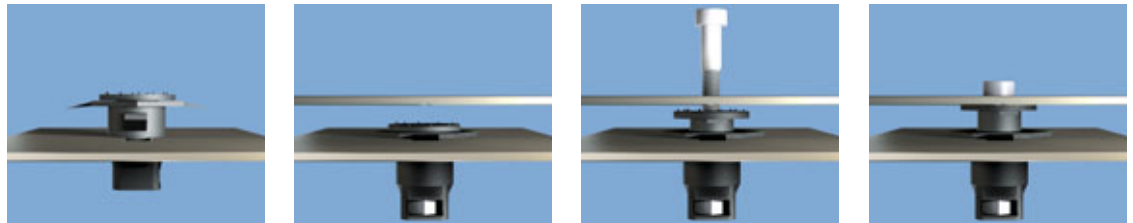
The system

FLEXITOL® plastic for metric screws consists of an adjustment element and a fastening element made of plastic. The new fastening element has much to offer. The functional bayonet version considerably reduces installation time – insertion and twisting. Further connections are available.

A self-locking hexagon nut is integrated in the fastening element. Due to the use of a hexagon nut, screw fastening with a metric screw is possible and reliably locked.

After positioning the components, screw-in starts. By screwing in the screw rightwards, the adjustment element drives out until touching the mounting part. The varying gap caused by tolerances is automatically compensated without deformation. After that, the screw is further screwed in up to the maximum tightening torque.

The functional principle



Insertion and twisting

Positioning of components

Compensation of tolerances

Fastening the assembly

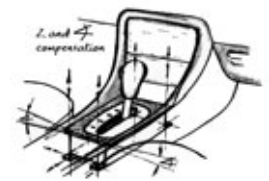
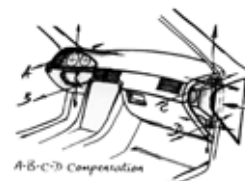
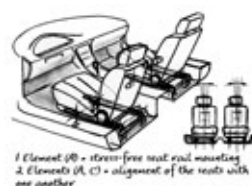
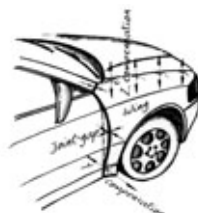
Technical data

Product code	Parent material	Material thickness	Max. axial force	Compensation distance	Max. Stopping force	Max. tightening torque
E100_042 bayonet version	metal or plastic	3 mm*	1,000 N	6 mm	< 10 N**	4 Nm
*On request, the component can also be adapted to other material thicknesses. **For contact surface according to design criteria.						
2705 006 0057 K' in K' version	plastic	5 mm min*	1,000 N	6 mm	< 10 N**	4 Nm
*Drill hole diameter and screw-in parameters must be consulted with our Application Engineering Department. **For contact surface according to design criteria.						

All for cars

In the following, we show you some of the many possible fields of application

- Front-end fastenings (headlight installation)
- Stress-free installation of plastic housings
- Precise and stress-free installation of large plastic covers
- Compensation of tolerances for tail-light installation, etc.



Böllhoff Group

Please find your local contact on www.boellhoff.com

or contact us under fasteningtechnology@boellhoff.com